

# **iROADS Dataset**

## **(Intercity Roads and Adverse Driving Scenarios)**

M. Rezaei and M. Terauchi  
Department of Computer Science, the University of Auckland  
[m.rezaei@auckland.ac.nz](mailto:m.rezaei@auckland.ac.nz)

### **Abstract**

As part of the published research [1]:

Mahdi Rezaei, Mutsuhiro Terauchi, "Vehicle Detection Based on Multi-feature Clues and Dempster-Shafer Fusion Theory", *Image and Video Technology*, Springer, Volume 8333, pp 60-72, 2014.

we release the **iROADS** as a comprehensive vehicle-dataset with 4656 image frames, in 7 categories, recorded from moving vehicles on the roads under various weathers and challenging lighting conditions:

<b>Condition</b>	<b>No. of Frames</b>
Daylight	903
Night	1050
Rainy day	1049
Rainy night	431
Snowy	569
Sun strokes	307
Tunnel	347

The dataset may be used as a unique reference for benchmarking and/or classifier-training purposes.

Non-compressed BMP format (1.54 GB):

<https://www.cs.auckland.ac.nz/~m.rezaei/Publications.html>

Compressed JPG format (89 MB):

[https://www.researchgate.net/publication/260219141\\_iROADS\\_Dataset.zip](https://www.researchgate.net/publication/260219141_iROADS_Dataset.zip)

### **Technical Specifications**

Sequence Length (Frames)	4656
Colour / Grey	Colour
Colour Depth	24-bit
Resolution (pixels)	640 x 360
Stereo Rectified	NA
Ego-motion data	NA

## Terms and Conditions

- 1- Modification and Commercial Use:** The database, in whole or in parts, may not be modified or used for commercial purposes.
- 2- Research Purpose:** The database is provided to aid researchers in the general areas of computer vision, image processing, and more specifically vehicle detection and driver assistance systems.
- 3- Indemnification:** The researcher who use this dataset agree that the collected dataset-iROADS is solely provided for research purposes and the providers will not be responsible for any kind of losses, expenses, damages, demands and/or claims based upon usage of the provided dataset.

## Sample Images

14 sample images (two from each category):



Figure 1: Daylight condition.

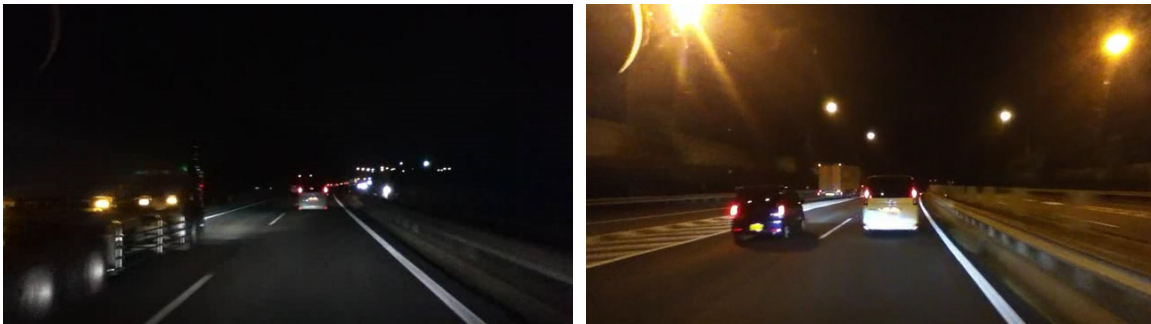


Figure 2: Night condition.



Figure 3: Rainy day condition.



Figure 4: Rainy night condition.



Figure 5: Snowy condition.

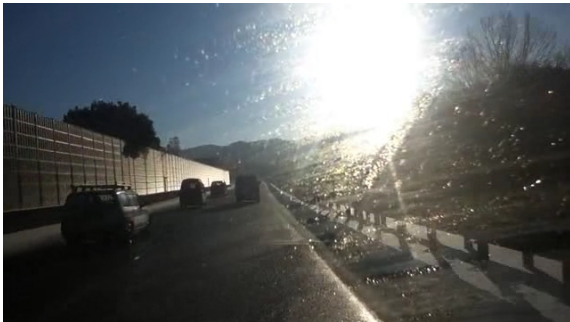


Figure 6: Sun strokes.

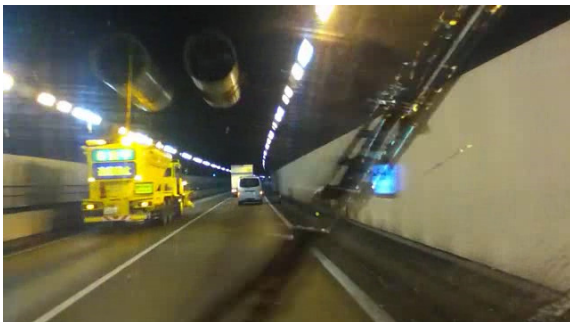


Figure 7: Tunnel.



## References

[1] Mahdi Rezaei, Mutsuhiro Terauchi, "Vehicle Detection Based on Multi-feature Clues and Dempster-Shafer Fusion Theory", International Conference on *Image and Video Technology*, Springer, Volume 8333, pp. 60-72, 2014.